



viasign



The battery-operated LED-full matrix viasign is excellently suited for showing features (texts, warning instructions and traffic signs). These features can be displayed as single images or as sequences/animations and are storable in up to 15 programs. The viasign has been designed for mobile usage with high visibility, long battery operating time and low weight.

Technical specifications:

- Rotary switch for quick on-site selection of the 15 programs
- Time scheduled programming
- High-performance LED display with automatic adaption of brightness
- Special designed protection mask for excellent visibility even under strong sunlight

Options:

An integrated radar detector enables:

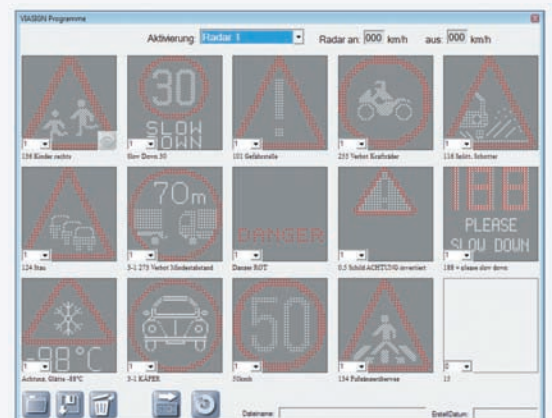
- speed activated display
- showing the current driven speed (Your speed ... mph), incl. data storage and evaluation software
- up to 4 logic inputs for connecting external sensors (e. g. measuring vehicle heights or wind forces)
- temperature sensor

Resolution:	64 x 64 Pixel (55 x 55 cm)
Number LEDs:	4096
Weight:	16 kg
Electrical performance:	ca. 4W @12V
Protection class:	IP 65
Ambient temperature:	-20°C / +70°C
LED aperture angle:	30°

Details:



LED-images for varied usage. Secure accident black spots, road-work and in-company traffic or use the viasign for temporarily controlling traffic or redirecting pedestrians.



Images can be chosen from the viasign database or can be created and transmitted with the aid of the viasign editor to the LED-full matrix.